

MAP TO LOON LAKE

Directions to Loon Lake

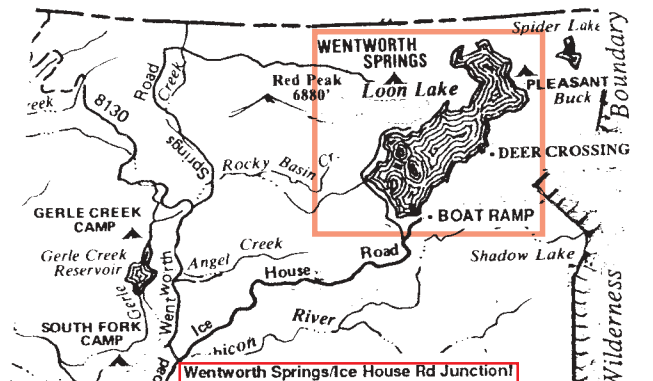
From Sacramento:

- Take Highway 50 east past Pollock Pines.
- Just after Highway 50 narrows to 2 lanes, turn left onto Ice House Road. A sign indicates that you are entering Crystal Basin Recreation Area.
- Stay on Ice House Road for 24 miles and watch for a right turn with a sign that says "Loon Lake." It is shortly after passing a small diversion dam on the left.
- About 4 miles up the road, turn right at the sign that says, "Loon Lake Forest Service Campground." The lake is not visible at this point.
- Drive 1/4 mile to the Boat Ramp Parking Lot. It is a large, circular area with restrooms and paved boat ramp.

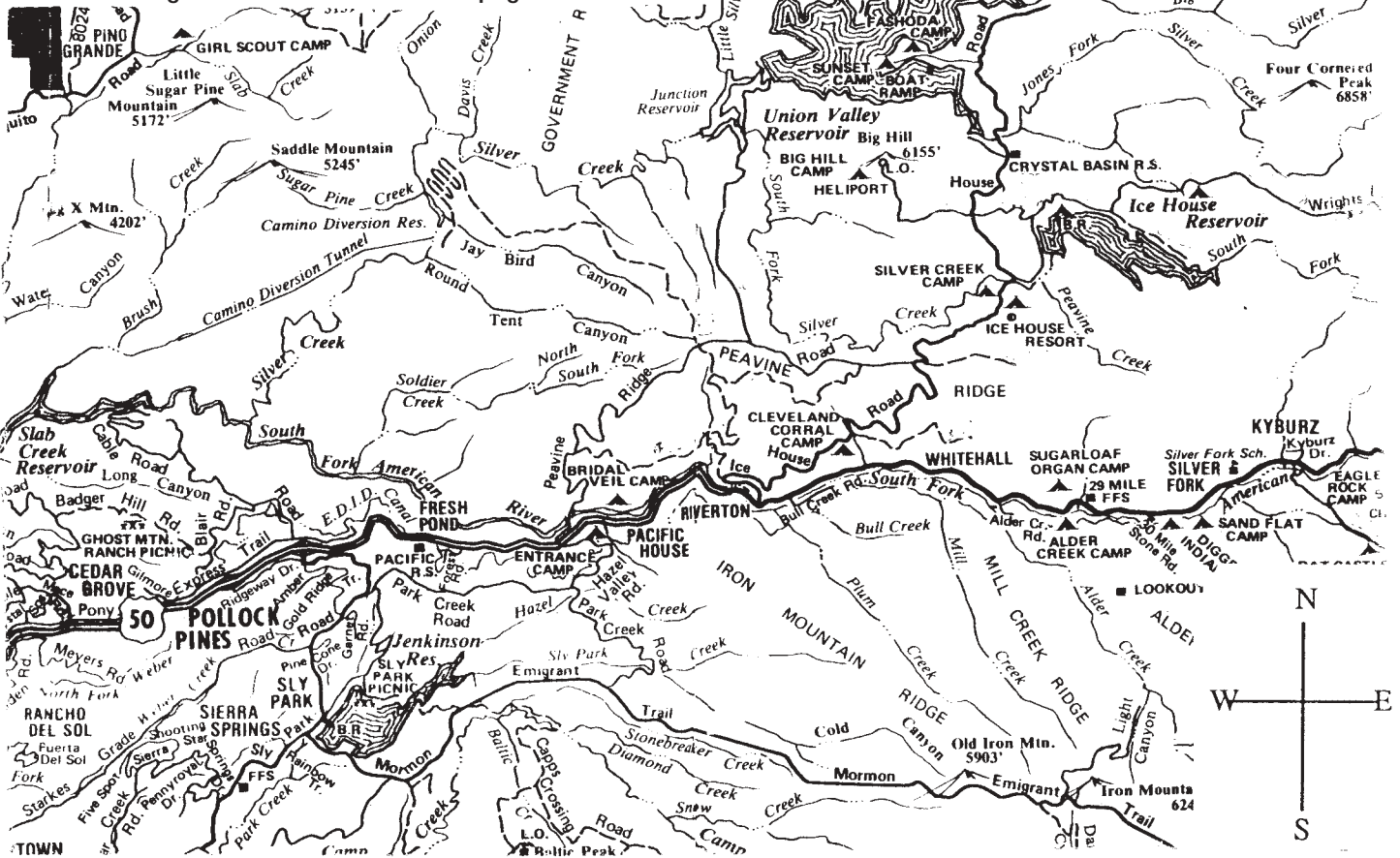
Landmarks on Ice House Road:

(Approximate distances from Highway 50)

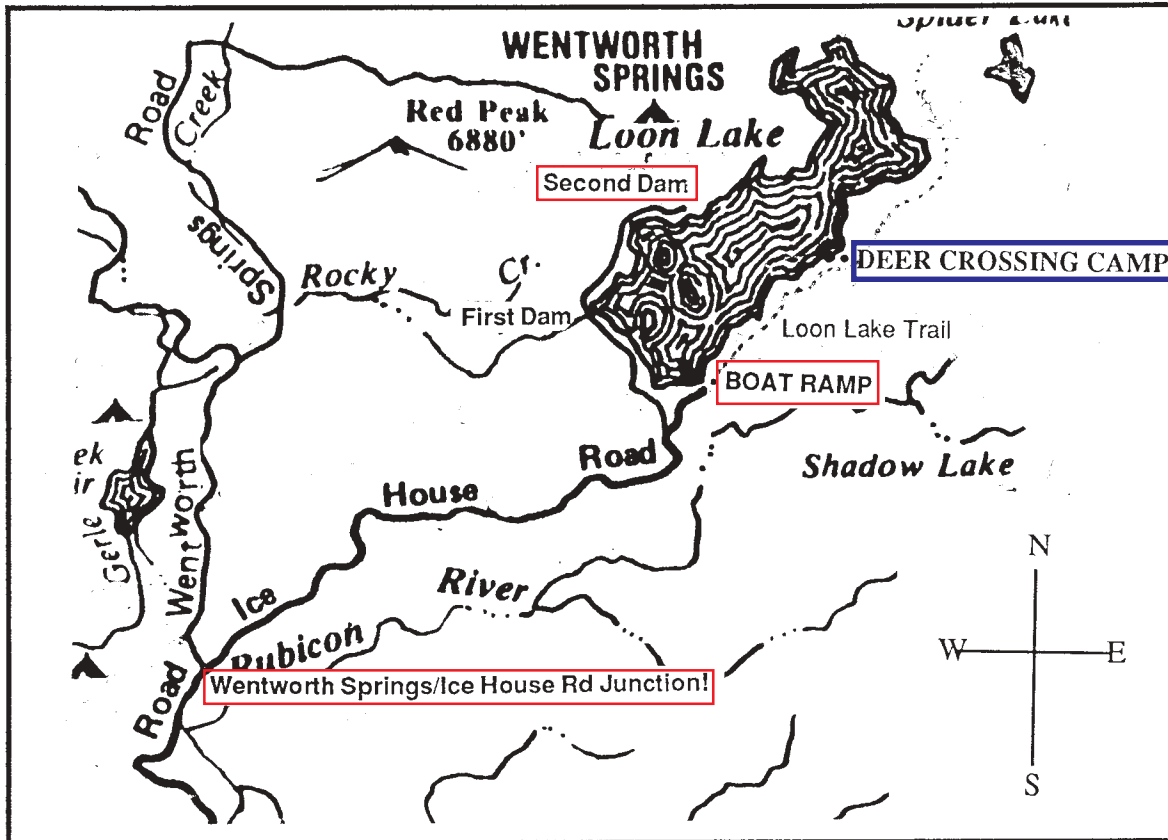
- | | |
|----------|--|
| 9 miles | Ice House Resort (gas, store, phone). |
| 12 miles | Crystal Basin Information Chalet (phone). |
| 21 miles | Robb's Resort (small store). |
| 24 miles | Ice House Road/Wentworth Springs Road junction. |
| 28 miles | Loon Lake Boat Ramp turnoff, then 1/4 mile to meeting place for bus, staff, and campers. |



Refer to enlargement of Loon Lake on page 8.



Enlargement Map to Loon Lake



Watch!!!

Watch for the Ice House Road/Wentworth Springs junction about 24 miles from Highway 50. If you continue on what appears to be the main road at this point, you will not get to Loon Lake. You need to make this right turn shortly after passing by a small diversion dam and canal that are on the left side of the road. Usually there is a sign with an arrow that says "Loon Lake." Sometimes the sign is missing. If you are heading steadily uphill after this turn, you are on the right road.

The Loon Lake Boat Ramp is our meeting point. Before you see the lake, you need to take the right turn into the entrance for the Forest Service Campground and Boat Ramp. If you do not make the turn, and you see the lake before you see the circular boat ramp area, you've gone too far. If you encounter any difficulties getting to the Boat Ramp, or if you think you'll be late, please call the office.

If you have the time, you may want to take Ice House Road half way around the lake to the second dam. Deer Crossing Lodge is visible directly across the lake from the second dam.

Deer Crossing Camp

Sierra Foothills Office
1919 Ridge Road, Mokelumne Hill, CA 95245
www.deercrossingcamp.com
mail@deercrossingcamp.com
phone & fax: (209) 293-2328